

3 FLANGE (MIM SERIES) PCB POWER TRANSFORMERS 50/60HZ, PRIMARY 115V OR 115/230V, SECONDARIES 5.0V TO 120V @ 1.1 TO 38VA

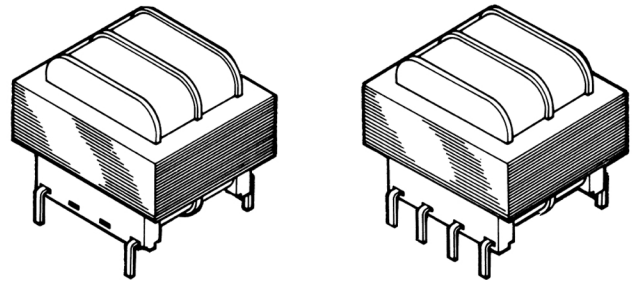
FEATURES

- 130°C insulation system
- 2,500Vrms hi-pot
- Dual Secondaries may be either Parallel or Series Connected
- Split Bobbin Construction-Center Flange Insulation Barrier; High Isolation for Low Leakage and Low Capacitance Applications



Contact Thordarson Meissner Sales
For Current Agency File Numbers

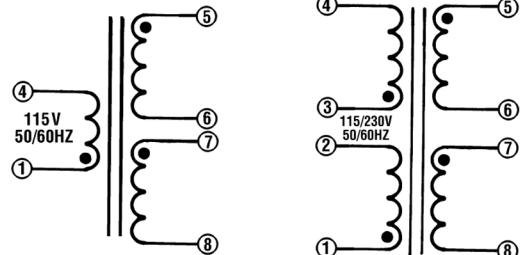
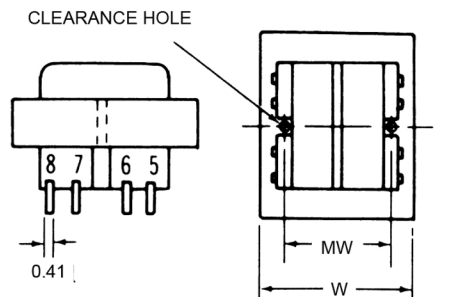
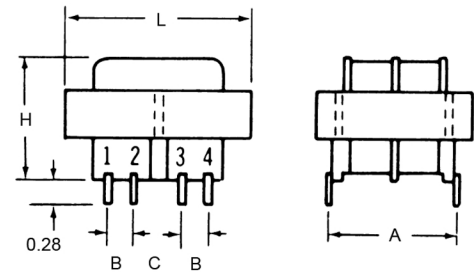
115 and 115/230V 50/60 Hz Primary Types



Dimensions in inches(mm)

MIM P/N Size	VA Size	Case			MTG MW	A	B	C	WT. lbs.
		H	L	W					
3XX	1.1	.938	1.375	1.125	—	1.200	.250	.250	.17
4XX	2.5	1.188	1.375	1.125	—	1.200	.250	.250	.25
5XX	6	1.313	1.625	1.312	1.062	1.280	.250	.350	.44
6XX	12	1.438	1.875	1.562	1.250	1.410	.300	.400	.70
7XX	20	1.563	2.250	1.875	1.500	1.600	.300	.400	.80
8XX	36	1.563	2.625	2.187	##	1.850	.400	.400	1.10

4 MTG holes 5/32 on 2-3/16 x 1-3/4 centers



Part Number		VA Size	Secondary RMS Ratings	
Single 115V	Dual 115V/230V		Series	Parallel
MIM321	MIM320	1.1	10V CT @ 10MA	5V @ 220MA
MIM323	MIM322	1.1	12.6V CT @ 90MA	6.3V @ 180MA
MIM325	MIM324	1.1	16V CT @ 70MA	8V @ 140MA
MIM327	MIM326	1.1	20V CT @ 55MA	10V @ 110MA
MIM329	MIM328	1.1	24V CT @ 45MA	12V @ 90MA
MIM331	MIM330	1.1	28V CT @ 40MA	14V @ 80MA
MIM333	MIM332	1.1	36V CT @ 30MA	18V @ 60MA
MIM335	MIM334	1.1	48V CT @ 23MA	24V @ 46MA
MIM337	MIM336	1.1	56V CT @ 20MA	28V @ 40MA
MIM339	MIM338	1.1	120V CT @ 10MA	60V @ 20MA
MIM421	MIM420	2.4	10V CT @ 250MA	5V @ 500MA
MIM423	MIM422	2.4	12.6V CT @ 200MA	6.3V @ 400MA
MIM425	MIM424	2.4	16V CT @ 150MA	8V @ 300MA
MIM427	MIM426	2.4	20V CT @ 120MA	10V @ 240MA
MIM429	MIM428	2.4	24V CT @ 100MA	12V @ 200MA
MIM431	MIM430	2.4	28V CT @ 85MA	14V @ 170MA
MIM433	MIM432	2.4	36V CT @ 65MA	18V @ 130MA
MIM435	MIM434	2.4	48V CT @ 50MA	24V @ 100MA
MIM437	MIM436	2.4	56V CT @ 45MA	28V @ 90MA
MIM439	MIM438	2.4	120V CT @ 20MA	60V @ 40MA
MIM521	MIM520	6	10V CT @ 600MA	5V @ 1.2A
MIM523	MIM522	6	12.6V CT @ 500MA	6.3V @ 1.0A
MIM525	MIM524	6	16V CT @ 400MA	8V @ 800MA
MIM527	MIM526	6	20V CT @ 300MA	10V @ 600MA
MIM529	MIM528	6	24V CT @ 250MA	12V @ 500MA
MIM531	MIM530	6	28V CT @ 200MA	14V @ 400MA
MIM533	MIM532	6	36V CT @ 170MA	18V @ 340MA
MIM535	MIM534	6	48V CT @ 125MA	24V @ 250MA
MIM537	MIM536	6	56V CT @ 110MA	28V @ 220MA
MIM539	MIM538	6	120V CT @ 50MA	60V @ 100MA
MIM621	MIM620	12	10V CT @ 1.2A	5V @ 2.4A
MIM623	MIM622	12	12.6V CT @ 1.0A	6.3V @ 2.0A
MIM625	MIM624	12	16V CT @ 800MA	8V @ 1.6A
MIM627	MIM626	12	20V CT @ 600MA	10V @ 1.2A
MIM629	MIM628	12	24V CT @ 500MA	12V @ 1.0A
MIM631	MIM630	12	28V CT @ 420MA	14V @ 840MA
MIM633	MIM632	12	36V CT @ 350MA	18V @ 700MA
MIM635	MIM634	12	48V CT @ 250MA	24V @ 500MA
MIM637	MIM636	12	56V CT @ 220MA	28V @ 440MA
MIM639	MIM638	12	120V CT @ 100MA	60V @ 200MA
MIM720	MIM721	20	10V CT @ 2.0A	5V @ 4.0A
MIM722	MIM723	20	12.6V CT @ 1.6A	6.3V @ 3.2A
MIM724	MIM725	20	16V CT @ 1.25A	8V @ 2.5A
MIM726	MIM727	20	20V CT @ 1.0A	10V @ 2.0A
MIM728	MIM729	20	24V CT @ 800MA	12V @ 1.6A
MIM730	MIM731	20	28V CT @ 700MA	14V @ 1.4A
MIM732	MIM733	20	36V CT @ 550MA	18V @ 1.1A
MIM734	MIM735	20	48V CT @ 400MA	24V @ 800MA
MIM736	MIM737	20	56V CT @ 350MA	28V @ 700MA
MIM738	MIM739	20	120V CT @ 160MA	60V @ 320MA
MIM820	MIM821	36	10V CT @ 3.6A	5V @ 7.20A
MIM822	MIM823	36	12.6V CT @ 2.85A	6.3V @ 5.7A
MIM824	MIM825	36	16V CT @ 2.25A	8V @ 4.5A
MIM826	MIM827	36	20V CT @ 1.8A	10V @ 3.6A
MIM828	MIM829	36	24V CT @ 1.5A	12V @ 3.0A
MIM830	MIM831	36	28V CT @ 1.3A	14V @ 2.6A
MIM832	MIM833	36	36V CT @ 1.0A	18V @ 2.0A
MIM834	MIM835	36	48V CT @ 750MA	24V @ 1.5A
MIM836	MIM837	36	56V CT @ 650MA	28V @ 1.3A
MIM838	MIM839	36	120V CT @ 300MA	60V @ 600MA